

# SCIENCE & ENVIRONMENT DIVISION



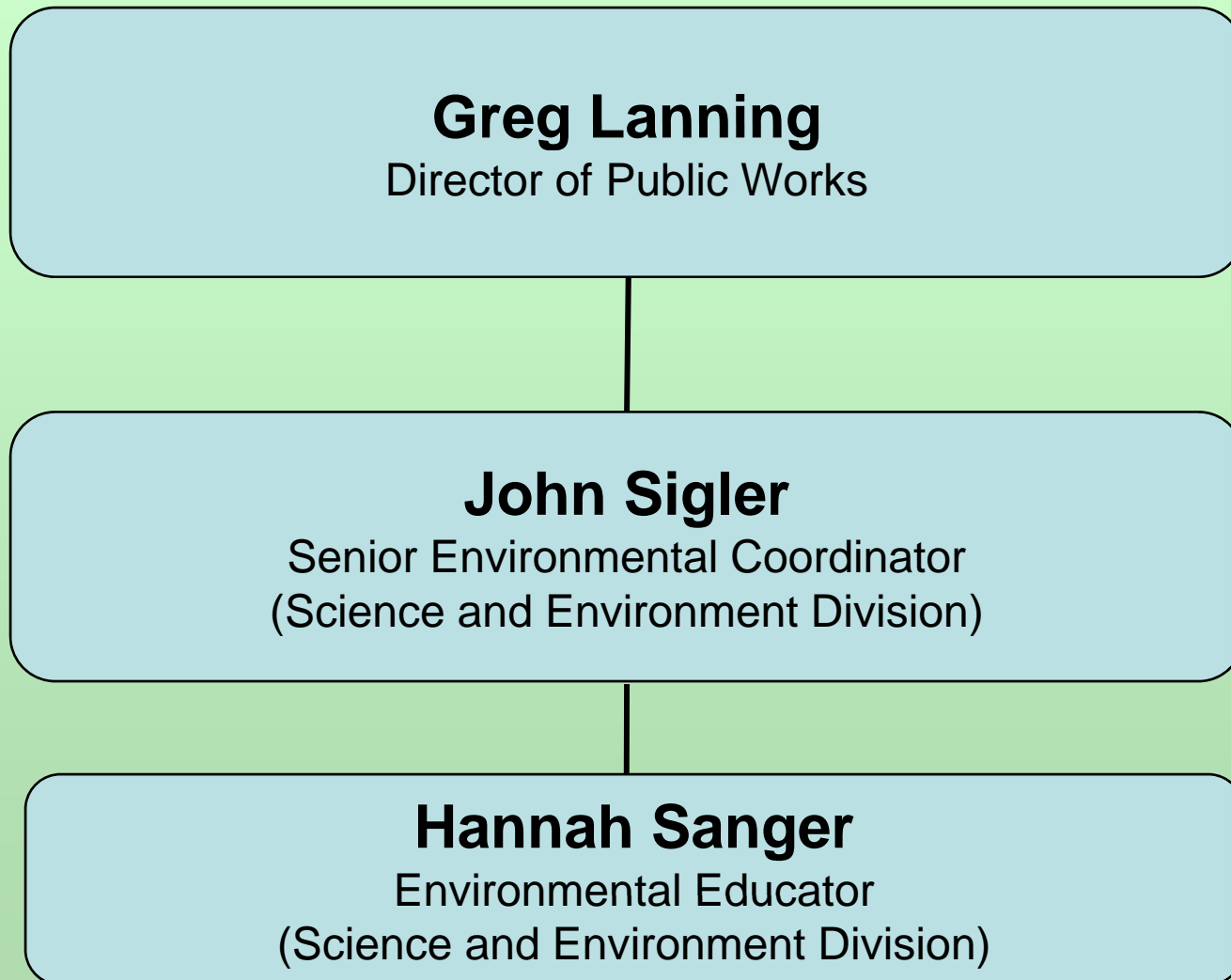
Service Level Report

FY08

# MISSION

- Manage the federal NPDES storm water permit to achieve permit requirements and resultant water quality improvements.
- Provide credible scientific information and advice to the mayor, council, and city staff on issues relevant to Pocatello's quality of life and surrounding environs.

# S&E DIVISION ORGANIZATION



# Measures of Inputs

## People

Engineering - Sci & Enviro	FY04	FY05	FY06	FY07	FY08	FY09
Full Time	0	0	0	1	1	2

## Money

	FY 2004 ACTUAL	FY 2005 ACTUAL	FY 2006 ACTUAL	FY 2007 ACTUAL	FY 2008 ACTUAL	FY 2009 BUDGET
<b>ENVIRONMENTAL SCIENCE</b>						
Labor				67,421	82,088	140,232
Operating				63,841	118,240	98,254
Capital				12,858		
<b>Total</b>	<b>0</b>	<b>0</b>	<b>0</b>	<b>144,120</b>	<b>200,328</b>	<b>238,486</b>
CPI	190.9	199.2	201.8	208.9	216.6	
Real FY04 \$	0	0	0	131,679	176,581	
% Change in Real FY04 \$, FY04-FY08					N/A	
% Change in Real FY04 \$, FY07-FY08					34.10%	

## Inherited Capital

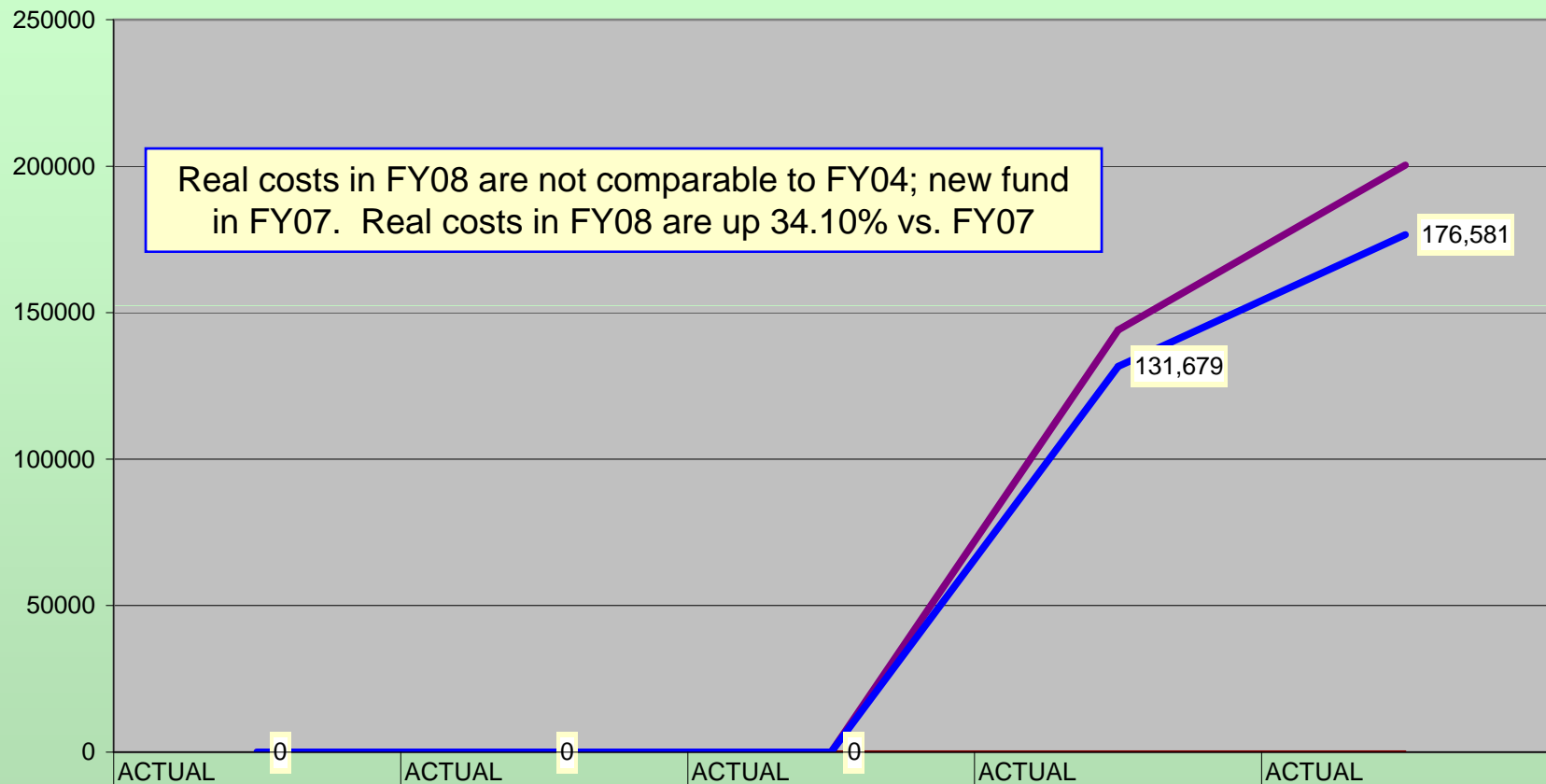
Water & discharge monitoring equipment

Note: New Fund in FY07

Previously part of engineering;  
previous to that was Fund 036  
(Stormwater); previous to that  
was in engineering

# Analysis of Inputs

## Science & Environment Fund Nominal & Real FY04-FY08



	ACTUAL FY 2004	ACTUAL FY 2005	ACTUAL FY 2006	ACTUAL FY 2007	ACTUAL FY 2008
Total	0	0	0	144,120	200,328
CPI	190.9	199.2	201.8	208.9	216.6
Real FY04 \$	0	0	0	131,679	176,581

# OUTPUTS

- Successfully completed 2<sup>nd</sup> year of 5-year federal storm water permit for Pocatello Urbanized Area.
  - City is co-permittee with Chubbuck, ITD, & Bannock County.
  - Recovered legal and permit management costs from partners.
- Completed additional UPRR work plan report review.
- Oversight of Sacajawea Park/Day Street storm water wetland management contract (now 96% complete).
- Re-established 50 meter anemometer tower for wind turbine farm potential for Pocatello.
- Passed 4 storm water ordinances dealing with:
  1. Sediment and erosion control
  2. Illicit discharges
  3. Yard debris
  4. Covered loads
- Continued Portneuf WAG TMDL participation for Portneuf River water quality issues (with WPC/PW).

# Sacajawea Park Engineered Wetland



Portneuf River

New storm water  
& pedestrian  
bridge

# MEASURES OF EFFICIENCY

- TBD
- Will research how other cities staff these responsibilities.

# **OUTCOMES: EFFECTIVENESS AND RESULTS**

- Implemented required permit program elements within budgetary structure.
- Recovered apportioned costs from co-permittees for legal and permit management costs. (\$ 39K)

# EXPLANATORY FACTORS

- Sensitive topography and watershed
  - Steep slopes, shallow aquifer
  - Steep slope ordinance (Geotechnic Working Group)
- Coordinated w/other Idaho MS4 entities

*Both factors heighten our needs in this area  
vs. an average city*

# ISSUES AND CONCERNS

- Multisector General Permit implementation and requirements (Industrial).
- New Construction General Permit (2009).
- Continuing education about federal permit requirements and city ordinances.
  - Training for developers and builders.
  - Mandatory training elements for certification